

Value of the Month
for March:
Hard Work

Winterbourne Junior Girls' School

Year 3 Newsletter 25

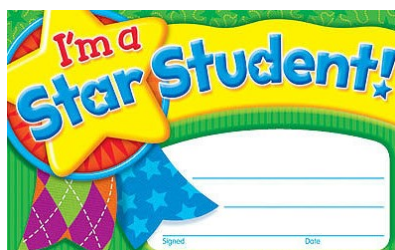
Week ending: Wednesday, 31 March



We're working
towards Artsmark
Awarded by Arts
Council England

School reopens after Easter
on Monday, 19 March

Star Student of the Term
Certificates



3.1 Safa
3.3 Esther

First Week of Next Term
English

Starting our new book
The Secret Garden.

Maths

Fractions, Word
Problems involving Bar Models

Science

We will be starting our topic *Are bugs important?*



Spelling Homework
for Spelling Test 24
23/04/2021



uniform

impossible

guard

memory

category

immature

shard

theory

factory

award

Easter is meant to be a
symbol of hope
renewal and new life



Happy Easter
to all families
celebrating
Easter this
weekend.



WISHING YOU A
JOYFUL & BLESSED
RAMADAN

We extend our best wishes
to all the families that start
celebrating Ramadan over
the school holidays.

Homework

Please note that we have set Easter Holiday Homework overleaf

Day	Weekly Homework beginning Monday, 19/04/21	Due
Monday, 19	Maths Practise test questions for retest this Friday.	22/04/21
Tuesday, 20	English 10 Minute Weekly Workouts Summer Term: Week 1	27/04/21
Wednesday, 21	Maths 10 Minute Weekly Workouts Summer Term: Week 1	27/04/21
Thursday, 22	MyMaths Complete MyMaths tasks.	27/04/21
Friday, 23	Spelling Learn Week 25 Spelling Words for test on Friday, 30/04/21.	30/04/21

Easter Holiday Homework



English 10 Minute Weekly Workouts — Spring

Complete all the workouts that you missed during the Spring term.

English 10 Minute Weekly Workouts — Spring

Complete all the workouts that you missed during the Spring term.

MyMaths — Spring

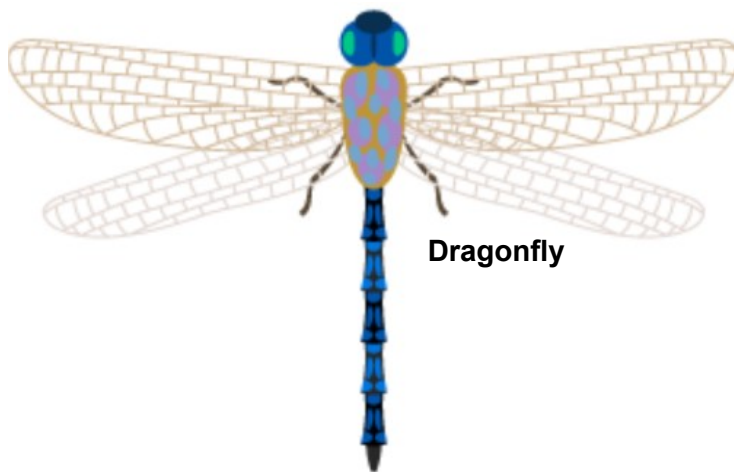
Complete all the tasks that you missed during the Spring term.

Reading

Log into your MyOn Reading Account each day so that you can spend at least 10 minutes reading. Once you have finished reading a book, you will need to click on Accelerated Reader so you can complete the book quiz. The book quiz helps assess how much you read and understand from the story.

Science and Computing

Complete the Branching Database task posted on Google Classroom. The task is located in the Homework folder and can also be found in the Stream tab. You need to create a branching database of the following six minibeasts: dragonfly, fly, bee, ladybird beetle, grasshopper and moth. Open the Clipart folder and select minibeasts from the dropdown menu to choose the pictures of the minibeasts. The pictures are shown below to help you identify each minibeast. You will need to do a little research to find out the characteristics of each minibeast so you can create a branching database with YES/NO questions. This work is related to your Science topic for next term.



Dragonfly

Fly



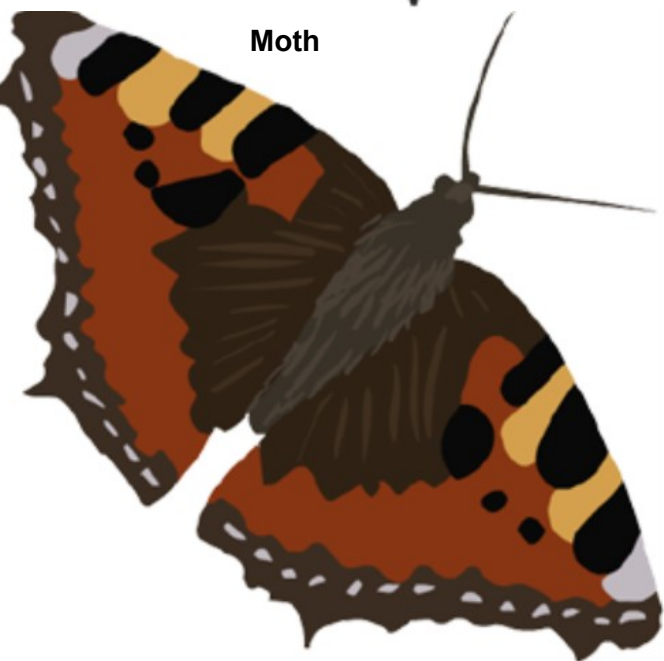
Bee



Ladybird beetle



Moth



Grasshopper

